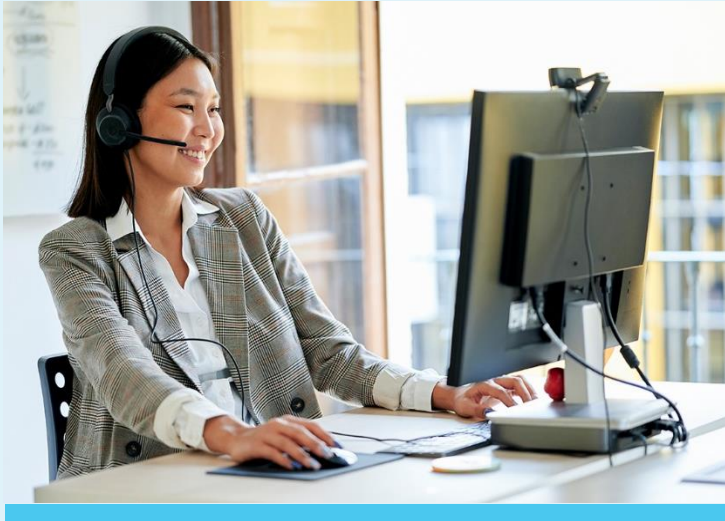


A made-for-you care plan

Meet your Family Concierge



Finding care, made easier

The days of stressing about family care are over. Introducing Bright Horizons Family Concierge.

How can your Family Concierge help you and your family?

Your Family Concierge provides time saving personalized guidance and creates a customized care plan based on your Bright Horizons benefits.

Here's what you can expect:

- ▶ Expert support and 1:1 assistance via email, text, phone or video
- ▶ Proactive guidance and personal outreach, coaching, and reminders
- ▶ Helpful information through personalized resources, curated content, and webinars

Why Bright Horizons Family Concierge?



It's easy to use

One click is all it takes to get started



It meets all your needs

Care for all your loved ones — both temporary and long-term. Plus, additional academic and household support.



It grows with you

As your family's needs evolve, your care plan can, too!



Contact our concierge team to get started

Visit <https://clients.brighthorizons.com/wiss>

Questions? Call 1-888-874-0420

